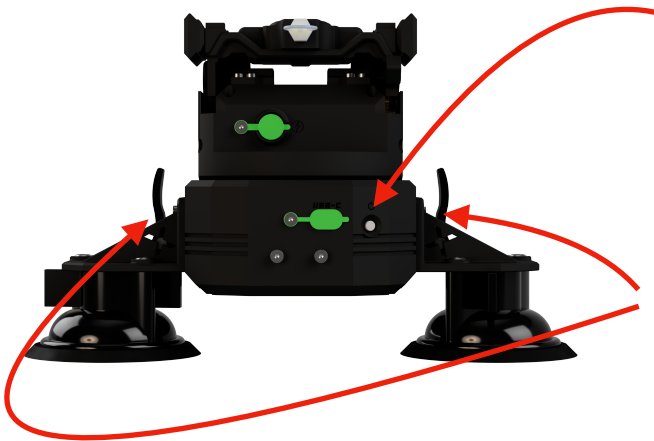
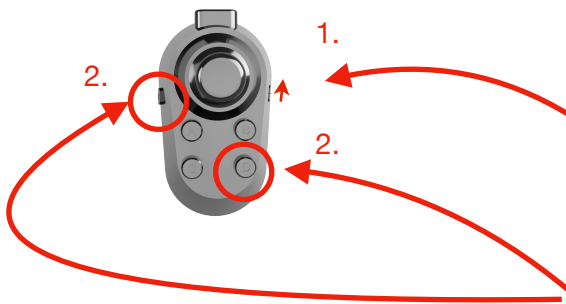


QUICK START GUIDE

TCROW XR-II



Press On/Off Button for 2 Sec. to switch on or off XR-II
XR-II starts blinking and starts calibration Mode
XR-II stops moving when calibration Mode is done
Fast Blinking = XR-II is not balanced (open clamping levers and bring XR-II in balance)
Slow Blinking = XR-II is fully balanced (close clamping levers)
Press On/Off Button to bring XR-II in Standby Mode
Use USB-C Cable for charging (Blinking stops when Battery is fully charged)



Switch on Remote Control
Remote starts blinking blue till it's connected to XR-II
Press Button M and D at the same time to bring Remote to Joystick Mode
Remote is now connected and ready to use



Control axes with tapping Joystick
Increase speed by holding Joystick in direction
Press turbo button to increase speed at maximum
Manual Mode = Press **A+B** at the same time
Target Mode = Press **B+D** at the same time
Scan Mode = Press **A+C** at the same time
Choose your angle and confirm by pressing **A+C** again
Home Button = Press **0** Button
Turbo Mode = Press **↶** Button



XSPECTER

MOUNTING GUIDE

TCROW

XR-II

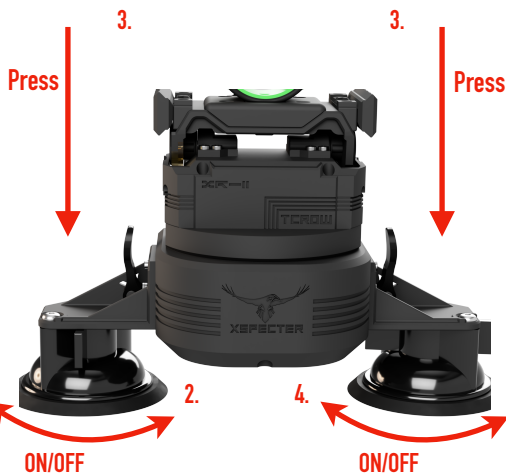
SUCTION CUPS



Clean the suction cups and the mounting surface carefully

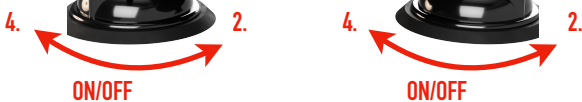
1. Open handles from the Base Mounts

2. Open the flaps of the suction cups to OFF position



3. Press XR-II softly in direction of the mounting surface

4. Close flaps from suction cups



Check if each suction cup is sitting smooth on the surface.

5. Close the handles of the Base Mounts



Check attachment by pulling lightly on the base of the XR-II

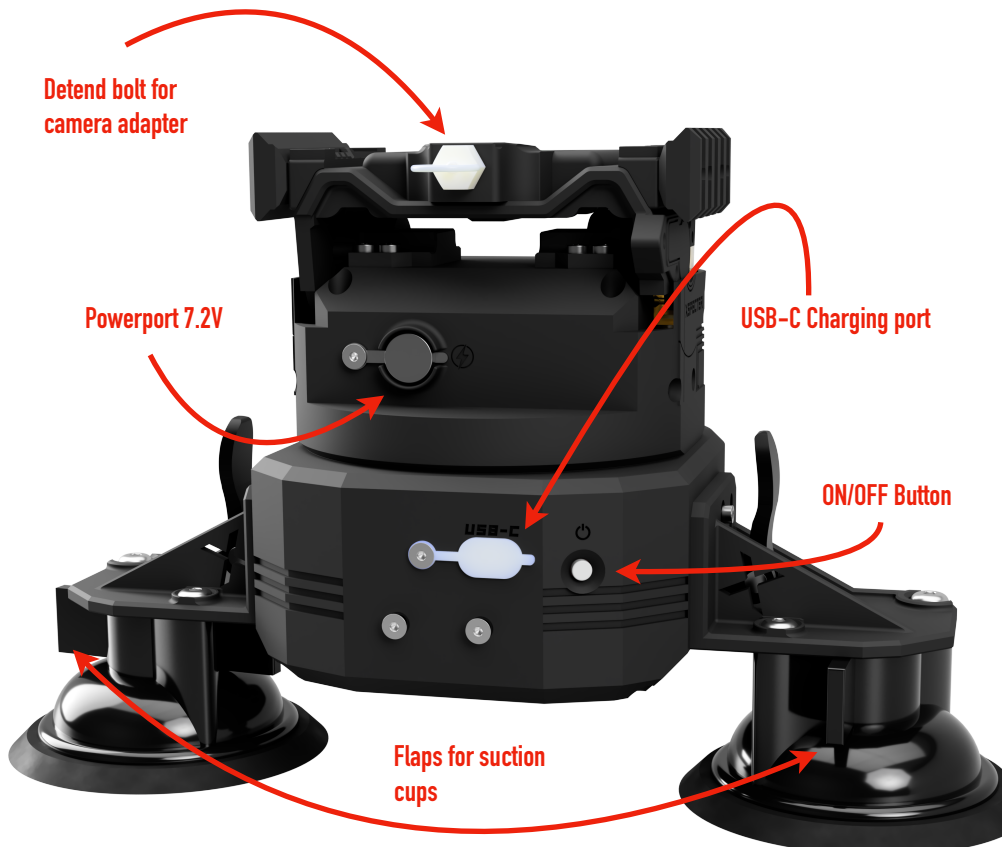


XSPECTER

OVERVIEW

TCROW

XR-II



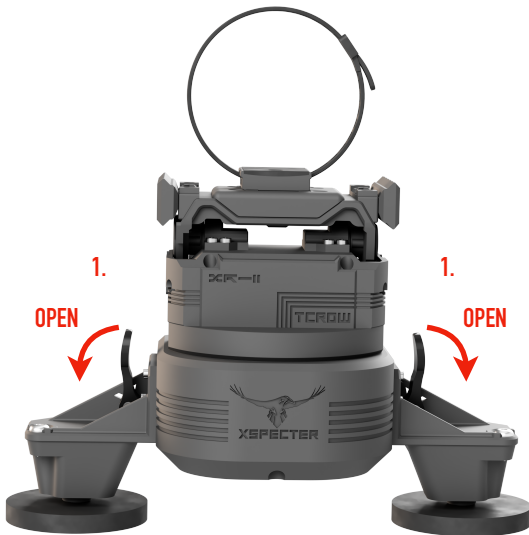
XSPECTER

MOUNTING GUIDE

TCROW

XR-II

MAGNET FEET



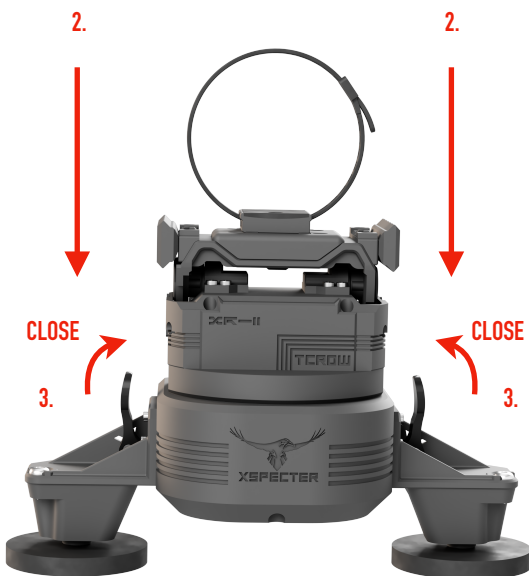
Clean the Magnet Feet and the to mounting surface carefully

1. Open handles from the Base Mounts

2. Place XR-II on surface

Check if each magnet foot is sitting smooth on the surface.

3. Close the handles of the Base Mounts



Check attachment by pulling lightly on the base of the XR-II

CAMERA MOUNT

TCROW

XR-II

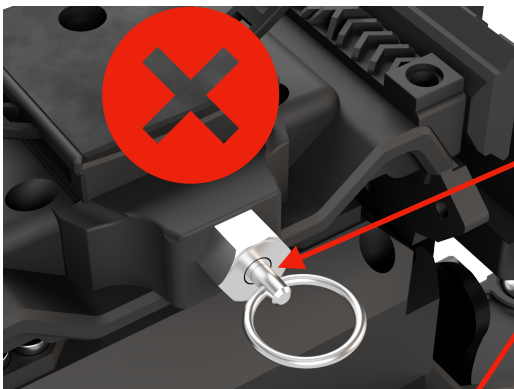


Check adapters for any damages or dirt. Remove cords from the camera so nothing can be stuck when XR-II operating

1. Push camera adapter in adapter shoe

2. Pull ring handle of detend bolt

3. Press adapter smoothly downward in adapter shoe



4. Release ring of detend Bolt

Check detend bolt is closed correctly and camera adapter is fitting completely in the adapter shoe



XPECTER

WARNINGS

TCROW

XR-II



Don't use on public Streets!

Only use for standing observations!

Only mount on clean and even surfaces!

Check suction cups for possible damages!

Use suction cups only above 0 degrees celsius!

Don't use T-Crow XR-II underwater!

Dry T-Crow XR-II in a warm environment after use in bad weather conditions like rain and snow!

Keep Hands away from moving parts!

Only use enclosed USB-C Cable for charging!

Use Powerport only for approved devices!

Don't mount heavy gear on XR-II , max load is 1,5kg!

Keep away from fire and children!



XSPECTER