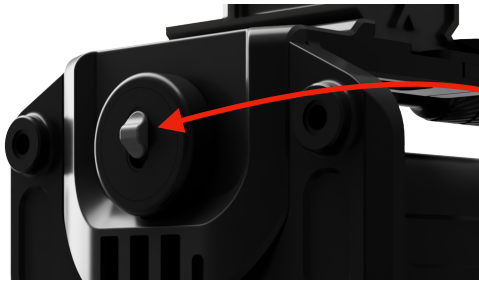


QUICK START GUIDE

XCROW



Switch Motor Locks on Unlock



Press On/Off Button for 2 Sec. to switch on or off XCROW
XCROW starts calibration Mode



Press On/Off Button for 2 Sec. to switch on or off Remote Control
Now your XCROW is ready to use.

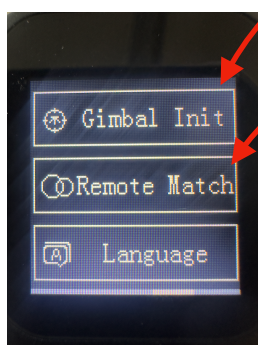
Mount your camera.

Remote is now connected and ready to use

To charge the Remote Control plug in USB-Micro cable

To enter Menu in the Remote swipe to left or right.

To enter calibration Mode for the Motors swipe 2x to left
an Press Gimbal Init. Now XCROW starts calibrating.



If the remote loses connection press remote match and
turn off XCROW, turn it on again and the remote will be
reconnected again.



X-SPECTER

MOUNTING GUIDE

XCROW

MAGNET FEET



Clean the magnet foos and the to mounting surface carefully

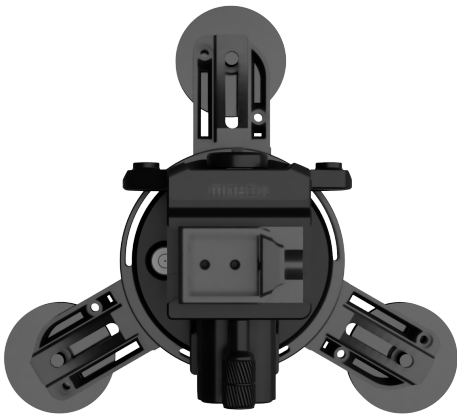


1. Screw in your magnets

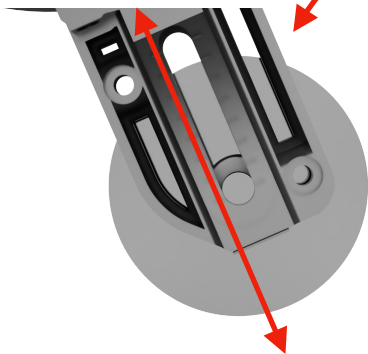
2. Adjust diameter

3. Place your XCROW on the surface

4. Close flaps from suction cups



Check if XCROW sitting smooth on the surface.



XSPECTER

OVERVIEW

XCROW



OVERVIEW

XCROW

REMOTE CONTROLER



CAMERA MOUNT

XCROW

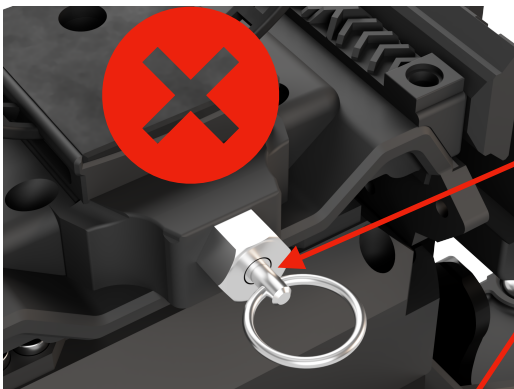


Check adapters for any damages or dirt. Remove cords from the camera so nothing can be stuck when XR-II operating

1. Push camera adapter in adapter shoe

2. Pull ring handle of detend bolt

3. Press adapter smoothly downward in adapter shoe



4. Release ring of detend Bolt

Check detend bolt is closed correctly and camera adapter is fitting completely in the adapter shoe



XSPECTER

WARNINGS



- Read the operating instructions carefully. They contain important information on the use, safety and maintenance of the appliance.
- Keep the instructions for use in a safe place and pass them on to any subsequent users.
- The appliance may only be used for its intended purpose in accordance with these instructions for use.
- Please observe the safety instructions during use.
- Check the appliance and accessories for damage before commissioning. Do not use the appliance if it is visibly damaged.
- Ensure that the appliance is stable during operation.
- Never use the appliance after a malfunction, e.g. if the appliance has fallen into water or been dropped or damaged in any other way.
- The manufacturer accepts no responsibility for incorrect use resulting from non-compliance with the operating instructions.
- Modifying or altering the product impairs product safety.
Warning: Risk of injury!
- All modifications and repairs to the appliance or accessories may only be carried out by the manufacturer or by persons expressly authorized by the manufacturer.
- Keep magnets away from all devices and objects that can be damaged by strong magnetic fields.
- Make sure that the product is charged at a socket that is easily accessible so that you can quickly disconnect the device from the mains in an emergency.
- Never open the product without authorization. Never carry out repairs yourself!
- Handle the product with care. It can be damaged by knocks, blows or falls from even a small height.
- Never immerse the product in water or other liquids.
- Always clean the surface on which you want to mount the XCROW before mounting it!
- The surface must be free of dust, dirt, grease and dry!
- Do not use on public roads!
- Only use for standing observations!
- Only mount on clean and level surfaces!
- Check suction cups for possible damage!
- Only use suction cups above 0 degrees Celsius!
- Do not use XCROW under water!
- Dry the XCROW in a warm environment after use in bad weather conditions such as rain and snow!
- Keep hands away from moving parts!
- Only use the enclosed USB-C cable for charging!
- Only use Powerport for approved devices!
- Do not mount heavy equipment on the XCROW, the maximum load is 3.5 kg!
- Keep away from fire and children!
- Important notes on disposal This electrical appliance should NOT be disposed of with household waste. For proper disposal, please contact the public collection points in your municipality. For details of the location of such a collection point and any quantity restrictions per day / day of use, please contact your local authority.



XPECTER